

# Water on the Surface



Trace the path of a water molecule from the top of the San Lorenzo River Watershed to the ocean.

## Rivers and Lakes

Most of the water that travels down streams ends up in the ocean, but some of it ends up in you! If you live in Santa Cruz, Live Oak, the west side of Capitola, or the San Lorenzo Valley, you get some or most of your water from creeks in the San Lorenzo River Watershed. If you live in Davenport you get your water from San Vicente Creek and Mill Creek. If you live in Watsonville or Corralitos, you get some of your water from Corralitos Creek.

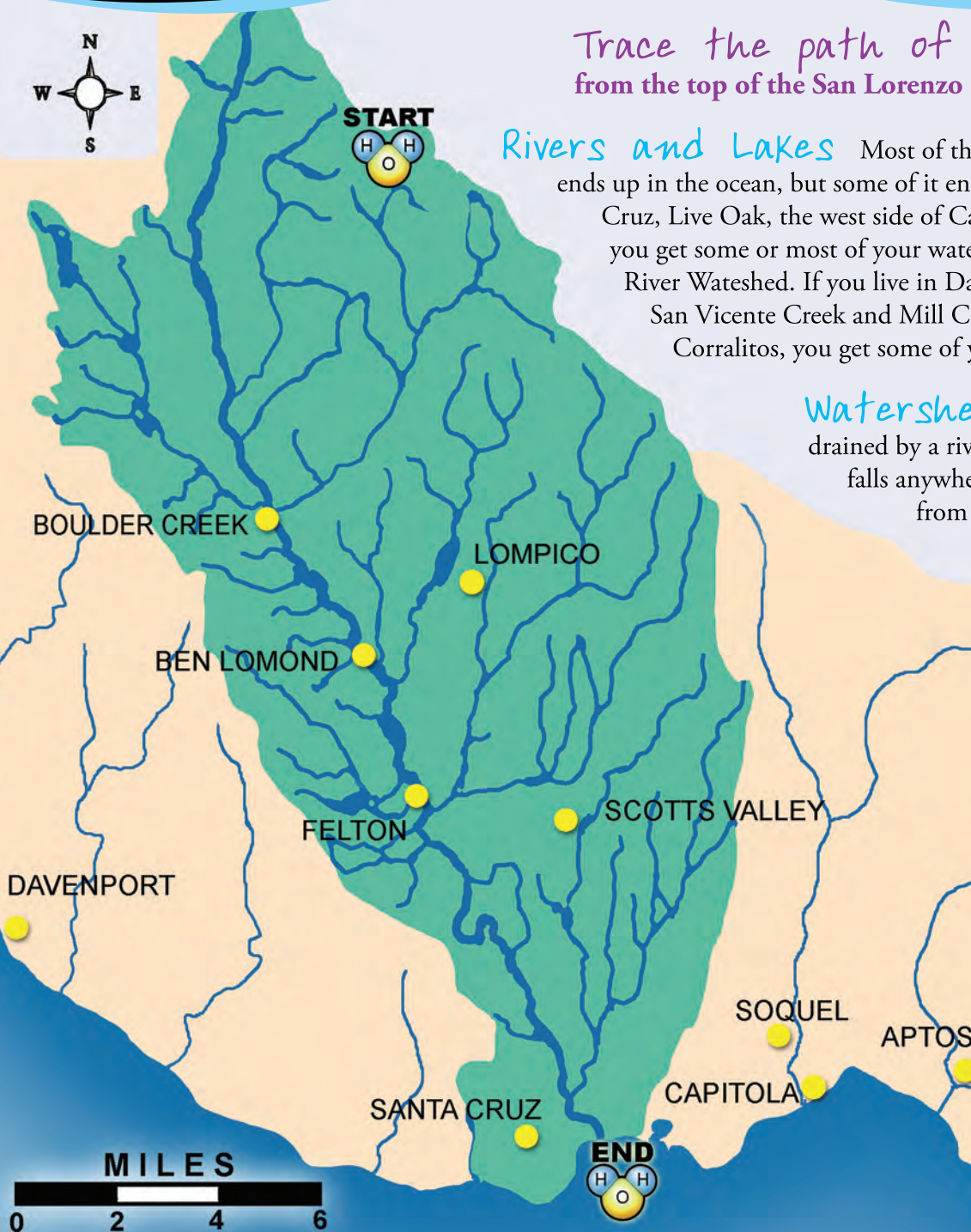
## Watershed

A watershed is the land area drained by a river or stream. For example, if rain falls anywhere in the San Lorenzo Watershed, from mountains to schoolyards, it will be pulled by gravity toward the San Lorenzo River or to the ground below.

## Home Activity

Look on the map on pages 8-11. Name some creeks and rivers near your town or city.

Go for a family walk along a river or creek. Watch how sticks travel in the water. Do they travel faster than you can walk? Look for animals and tracks.



## Santa Cruz County Water Math

Water doesn't travel in a straight line down a river. It twists and bends. Water in the San Lorenzo River bends along for 24 miles on its way to the ocean. It takes a water drop 4 hours to travel these 24 miles during a heavy storm. How fast is the water traveling in miles per hour (mph)? \_\_\_\_\_ miles ÷ \_\_\_\_\_ hours = \_\_\_\_\_ mph

On a summer day, when it hasn't rained for a while, the trip may take 72 hours (3 days). How many miles per hour is this?

\_\_\_\_\_ miles ÷ \_\_\_\_\_ hours = \_\_\_\_\_ mph

(The answer is less than 1 mph and can be written as a fraction or a decimal.)

**Extra:** Compare these speeds to how fast you walk. (If you walk a mile in half an hour, you are traveling at 2 mph.)